



Torrance County Extension Office
205 S Ninth Street
PO Box 168
Estancia, NM 87016
Phone: 505-544-4333
Email: torrance@nmsu.edu



CLOVERLEAF

April 2025

Hello 4-Her's, Leaders and Parents,

Hope all is well with all our 4-H families!
Enrollment for the 2024-2025 4-H year is now closed so please make sure your enrollment is complete.

Please make sure you are entered into all the project classes you are interested in and sign up for any the project workshops you would like to attend. If you need any project books please contact the office.

If you have any questions or need any help please contact the Extension Office.

Debby Maberry- Extension Family and Consumer Science Agent/4-H

Angela Hurst-Extension Agricultural Agent/4-H

Deb Adcock- Administrative Assistant

Deborah Olivas- ICAN Nutrition Educator

Happy Birthday
Wishes To:

Leslie Chavez

Lexi Chavez

Raylan Phillips

Chayce Russell

Brett Whitaker

Clayton Whitaker





LEARN BY DOING



Upcoming Classes

4-H AIR RIFLE PRACTICE

APRIL 3RD 2:30-3:30 PM & 3:30-4:30 PM

4-H LIVESTOCK TAG-IN CATTLE:

APRIL 9, 2025 4PM-7PM

(NO CREATIVE ART CLASSES)

4-H ARCHERY AND AIR RIFLE PRACTICE

APRIL 17TH 2:30-3:30 PM & 3:30-4:30 PM

4-H CERAMICS, ART, AND LEATHER CRAFT

APRIL 23RD 2:30-3:30PM & 4:00-5:00 PM

4-H ARCHERY AND AIR RIFLE PRACTICE

MAY 1ST 2:30-3:30 PM & 3:30-4:30 PM

**(CONTACT SHOOTING SPORTS LEADERS FOR
PRACTICES AT BIG HORN)**

Greetings from the Ag Agent:

4-H Agriculture and Natural Resources Updates:

- The county Extension and East Torrance Soil & Water will be cleaning out the community garden beds, so be on the lookout for opportunities to learn about gardening at your house!
- In March, the Moriarty kindergarten incubated 24 eggs for the Egg to Chick project. A total of 18 chicks hatched and we are so excited. See the pictures below. Thank you to our AMAZING volunteers who donated the eggs for this project to happen!
- Check out later pages for some Ag and livestock related workshops and clinic dates. Contact the office if you would like to register for any of these.

•4-H Livestock: Tag-In Days

- *Cattle: 4/9/2025 4pm-7pm
- *Sheep/Goat/Swine: 6/4/2025 4pm-7pm
- *Make-up for Sheep/Goat/Swine: 6/7/2025 8am-10am



Beyond Ready

•4-H Shooting Sports:

- *Senior 4-Hers interested in attending the **State Shooting Sports Championship**, we have the rule book available on the State 4-H website or you can contact the office and we can send you the link. Registration is due to the county by April 9th.
 - *The **2025 NW 4-H District Shooting Sports Contest** will be June 13th, 2025 at the Albuquerque City Range. Registration and Tests will open at 8 am on April 21st and close on May 30th at 5 pm. I have compiled a bank of questions that might be on the test and are available at the office. All questions come from the project book, so if you don't have one for your discipline, make sure to let the office know.
 - I want to provide fun opportunities for students to learn about their project areas and Agriculture as a whole. Please fill out this survey so I can know when to best schedule these workshops. Thank you!
- [*Online Survey Software | Qualtrics Survey Solutions](#)
- *If you would rather fill this out in person, feel free to stop by the 4-H office and ask to fill out the 4-H ag survey.



Leadership Skills Workshop



Speak Up, Stand Out, & Make It Count: Master Parliamentary like a PRO!!

When: Wednesday, April 30th 2:30pm & 4:00pm

Who: All 4-H Youth interested in leadership.

For more information and to RSVP, please contact the Torrance County Cooperative Extension Service

Office: 505-544-4333 or torrance@nmsu.edu



Beyond Ready



New Mexico State University, in cooperation with the U.S. Department of Agriculture is an equal opportunity/affirmative action employer and educator. If you are an individual with a disability who is in need of an auxiliary aid or service to participate, please contact Angela Hurst at 505-544-4336 or angeladh@nmsu.edu

BE BOLD. Shape the Future.[®]
College of Agricultural, Consumer
and Environmental Sciences



4-H Shooting Sports

Learn by Doing

Shooting Sports Practices have started, so please reach out to following certified leaders for more information. Please make sure to complete your 4-H enrollment paperwork before attending any practices. If you need any help please contact the Extension office at 505-544-4333 email Torrance@nmsu.edu.

RIFLE, AIR RIFLE, ARCHERY

& PISTOL

JACKIE &

DOYLE YOUNG

DOUBLEFOX22@YAHOO.COM

575-760-3677

SHOTGUN

NATHAN DIAL

DIALNATHAN@MSN.COM

(910)988-5098

ARCHERY

ANGELA HURST

ANGELADH@NMSU.EDU

(505)544-4336



Shooting Sports

ART & CRAFT



WORKSHOPS

4-H Youth Learn a new skill from
the 4-H Project books starting on
Wednesdays February 12th

- Pottery/ceramics
- Creative Arts
- Leather Craft
- Cooking/Baking
- Sewing
- and more!

Second
&
Fourth
Wednesdays

1:30 pm-
5:30 pm

For more information please
contact the Torrance County
Cooperative Extension Service
Office

at 505-544-4333

torrance@nmsu.edu



BE BOLD. Shape the Future.
College of ACES
Cooperative Extension Service

NEW MEXICO STATE UNIVERSITY IS AN EQUAL OPPORTUNITY/AFFIRMATIVE ACTION EMPLOYER
AND EDUCATOR. NMSU AND THE U.S. DEPARTMENT OF AGRICULTURE COOPERATING.

If you are an individual with a disability
who is in need of an auxiliary aid or service
to participate, please contact Debby
Maberry in advance at (505) 544-4334 or
maberryd@nmsu.edu.

Torrance County Cooperative Extension Service

FREE CRAFT CLASSES

SPRING CLASSES

Join us for a free two-part series of classes at Bethel Storehouse in Moriarty following the free ICAN nutrition education class. Attend as many as you like to enjoy food sampling with ICAN and fun craft workshops on Monday April 21st and 28th.



❖ April 21st Cross Stitch

Register today! Class size limited.
(call or email to reserve your spot).

❖ April 28th Plastic Canvas Art

Time: 12pm to 2 pm

Where:

Bethel Storehouse
1719 4th Street
Moriarty, NM 87035

Contact:

Debby Maberry
Family and Consumer Science Agent/4-H
505-544-4334
maberryd@nmsu.edu



BE BOLD. Shape the Future.
College of Agricultural, Consumer
and Environmental Sciences

If you are an individual with a disability who is in need of an auxiliary aid or service to participate, please contact Debby Maberry in advance at (505) 544-4334 or maberryd@nmsu.edu.

New Mexico State University is an equal opportunity/affirmative action employer and educator.
NMSU and the U.S. Department of Agriculture cooperating.



NM 4-H FCS School



A NOTE FROM MARISSA:

NM 4-H FCS SCHOOL OF REAL-LIFE SKILLS took place March 7-9, 2025, at the Bernalillo CES Office in Albuquerque, NM, bringing together over 200 participants for a weekend of learning, competition, and service.

The event kicked off with FCS Carnival Night, where youth participated in Consumer Decision Making, FCS Skillathon, Public Speaking, and FCS Bowl contests.

Saturday featured hands-on 4-H project workshops, including an outstanding Outdoor Cooking track led by Southwestern Indian Polytechnic Institute (SIPI) and NMDA chefs.

On Sunday, youth gave back by creating nurse badges, thank-you cards, and pen flower bouquets to show appreciation for local healthcare staff.

This year's event had 118 youth registrations, 20 junior instructor applications, and 200+ attendees.

Thank you to everyone who participated and helped promote the event! We're already excited for next year's FCS School of Real-Life Skills! 😊



SAVE THE DATE

SOUTHERN REGIONAL LIVESTOCK SCHOOL

JUNE 4-6, 2025
Capitan, NM

Registration window: April 16-30

\$150 registration fee

Register at
socorroextension.nmsu.edu

4 Species Tracks Available!

Goats ◀ Beef Cattle ◀
Swine ◀ Lamb ◀

For more information Contact:
Emily Bruton 575-835-0610
Sara Marta 575-894-2375
Teresa Dean 575-525-6649, or
Savannah Daniels 575-542-9291

NM STATE
RE BOLD. Shape the Future.
College of Agricultural, Consumer and Environmental Sciences

NEW MEXICO 4-H

If you are an individual with a disability and need an auxiliary aid or service, please contact Sierra County Extension at 575-849-2375 by May 15.
New Mexico State University is an equal opportunity affirmative action employer and educator.

★ ★ ★ ★ ★ ★ ★ ★ ★ ★

ROOSEVELT COUNTY 11th ANNUAL ALL-AMERICAN CLASSIC GOAT & LAMB JACKPOT

Saturday, July 5, 2025



Roosevelt County Fairgrounds
Cost \$30.00 a Head per Ring
\$5.00 per head clean-up fee!
There will be Two Shows for both Goats and Lambs
There will also be two Wether Doe Shows and
two Wether Dam Shows!!!

Weigh in Starts at 6:30 AM (MST). Scales will Close at 8:30 AM (MST)
The show starts at 9:30 AM (MST)

100% Cash Payback and T-shirts for all exhibitors
For more information, contact:
Wes Weems (575) 512-5832 (Goats)
Shawn Burrow (806) 683-9502 (Sheep)





ZIA DAIRY CLINIC & SHOW

MAY 31 - JUNE 1, 2025
SATURDAY 31ST CLINIC 8AM
SUNDAY 1ST SHOW 10AM

SHOWMANSHIP

NUTRITION

DAILY CARE

FITTING

HEIFER SHOW

WHITES SWAP

HOOF TRIMMING

REGISTER NOW AT:

[HTTPS://FORMS.GLE/B4CKZVLJZL3FJR02A](https://forms.gle/B4CKZVLJZL3FJR02A)
REGISTER BY MAY 15TH

FOR MORE INFO AND
UPDATES LIKE OUR FACEBOOK PAGE:
[HTTPS://WWW.FACEBOOK.COM/ZIADAIRYCLINIC](https://www.facebook.com/ZIADAIRYCLINIC)

CLINIC IS FREE | LUNCH PROVIDED
SHOW IS \$20/HEAD




ROOSEVELT COUNTY FAIRGROUNDS
705 E LIME
PORTALES, NM
ZIADAIRYCLINIC@GMAIL.COM

QUESTIONS? CALL/TEXT
TRICIA MONK 575-308-3551
JOE PINEDO 575-714-4102
JUSTIN BURRUS 806-315-0294
MELISSA FREITAS 806-252-5809
KELSEY STARNES 575-513-2723

Torrance County Cooperative Extension Service is simply sharing this information. Not all events or programs advertised in this newsletter are sponsored or endorsed by NMSU for more information please call the number listed on the flyer.

ANNOUNCING THE 2025

Heritage Buckle Contest

"Keeping the traditions of
ranching alive in New Mexico by
supporting our youth!"

**Youth can win a belt
buckle and \$1,000**

Applications Due -
May 9, 2025
Ages 9-15
200-500 word essay

Apply at - nmagriculture.org/heritage-buckle-contest



If you are interested in the Heritage Buckle Contest, there is more information available at the Extension office, so feel free to reach out.



NORTHERN NEW MEXICO 4-H

DISTRICT CONTESTS

JUNE 24-25, 2025

TAOS, NM

REGISTRATION AVAILABLE SOON

Northern Livestock Schools

SAVE THE DATES 2025

**MAY
17**

SMALL ANIMAL SCHOOL: RABBIT

Location:
Bernalillo County Extension Office



**MAY
18**

SMALL ANIMAL SCHOOL: POULTRY

Location:
Bernalillo County Extension Office



**JUNE
20 &
21**

NORTHERN LIVESTOCK SCHOOL

Location:
Torrance County Fair Grounds



NEW MEXICO STATE UNIVERSITY IS AN EQUAL OPPORTUNITY EMPLOYER. ALL PROGRAMS ARE AVAILABLE TO EVERYONE REGARDLESS OF AGE, COLOR, DISABILITY, GENDER, NATIONAL ORIGIN, RACE, RELIGION, SEXUAL ORIENTATION OR VETERAN STATUS. NMSU AND THE USDA COOPERATING.

April

April 5-Valencia County Pig, Lamb & Goat Sale-Belen, NM (Pigs, Lambs & Goats)
April 5-Red Raider Sheep & Goat Sale-Lubbock, TX (Lambs & Goats)
April 6-Dowell Show Lambs-Tucumcari, NM (Lambs Only)
April 8 & 10-Skelley Show Goats-Causey, NM (Online Goats) showgoats.com
April 11-NM Elite-Portales, NM (Lambs & Goats)

This guide is updated weekly.
Please send your sale flyers to
jessiej@nmsu.edu

New Mexico State University is an equal opportunity / affirmative action employer and educator. NMSU and the U.S. Department of Agriculture cooperating.

April

April 11-The After Party-Portales, NM (Lambs & Goats)
April 12-Klein Invitational Sale-Artesia, NM (Lambs & Goats)
April 12-The Sort Pig Sale-Waterflow, NM (Pigs Only)
April 12-Bi-County Livestock Sale-Prewitt, NM (Pigs, Lambs & Goats)
April 26-Route 66 Show Pig & Goat Sale-Holbrook, AZ (Pigs & Goats)

New Mexico State University is an equal opportunity / affirmative action employer and educator. NMSU and the U.S. Department of Agriculture cooperating.

Torrance County Cooperative Extension Service

Position Available:

CES County Program Assistant

Our Cooperative Extension program provides a creative and supportive environment in which culturally diverse adults and youth can reach their full potential. Local county CES programs work to improve the lives of citizens and assist youth in developing positive life skills.

Position Summary & Responsibilities:

- Provide programs, under direction of county extension agent, in the areas of 4-H, Family & Consumer Sciences and Agriculture. Assist extension agents at County Fairs, local programs and events and school enrichment.
- Under general supervision responsible for paraprofessional work and an education program.
- Plan, prepare PowerPoint presentations, and deliver educational programs to youth and adults. Keeps records and writes reports of work planned and completed.
- Enter enrollment and conference registration into the 4-H Plus software program. Answers telephone and greets public giving general information regarding all extension programs.
- Sorts and distributes incoming mail. Types routine letters, labels, and similar items from rough draft or clear copy. Files correspondence, memoranda, reports and other materials. Maintains routine clerical records, logs and data and completes routine reports. Performs other miscellaneous duties as assigned.

Required Qualifications:

- High School diploma or GED and two (2) years of experience related to the standard duties as outlined.
- (Completion of a post-secondary degree or certificate may substitute for years of experience)
- Knowledge of techniques and procedures required in teaching techniques and skills. Knowledge of mass media and computer skills desirable. Ability to take direction and work independently. Ability to communicate with youth and adults.
- Ability to establish and maintain a congenial working relationship with children, associates and the public; follow oral and written instructions; establish effective relationships as a teacher; work in a self-contained or team teaching situation; supervise subordinates; deal with children one-on-one and in groups.
- Full-time, 40 hour/week position, Monday-Thursday; Must be willing, and have the ability, to work odd hours and weekends as necessary.



**Cooperative Extension Service
Torrance County Extension Office**

**Position Location:
Torrance County Administrative
Building
205 9th Street
Estancia, NM 87016**

For any questions contact:

Debby Maberry
Torrance County Program Director
maberryd@nmsu.edu
505-544-4334
or visit

<https://careers.nmsu.edu/jobs/ces-county-program-assistant-nmsu-satellite-location-new-mexico-united-states-7068e198-817b-4eb0-8868-4f22d6b809ef>



**BE BOLD. Shape the Future.
College of Agricultural, Consumer
and Environmental Sciences**

**New Mexico State University is an equal opportunity/affirmative action employer and educator.
NMSU and the U.S. Department of Agriculture cooperating.**



HIDALGO COUNTY 4-H

HORSE SHOW SCHOOLING BUCKLE SERIES

FEBRUARY 22

MARCH 22

APRIL 19

MAY 17

JUNE 14

JULY 19 - AWARDS

**TO REGISTER AND FOR MORE
INFORMATION, SCAN THE QR CODE**



Profitability in

Agriculture

*KNOW YOUR NUMBERS,
KNOW YOUR OPTIONS*



ANNIE'S PROJECT
EMPOWERING WOMEN IN AGRICULTURE

**SESSIONS IN JANUARY
REGISTER NOW!**



BE BOLD. Shape the Future.
College of Agricultural, Consumer
and Environmental Sciences
Cooperative Extension Service
Guadalupe County Extension Office

This course will help farmers and ranchers understand their current financial position, impacts of large purchases, new leases or changes in production on their bottom line. The program includes real case studies, benchmarking, hands-on workshops using your own numbers, and interactive discussion.

Upon completion of this program, participants will have a better understanding of how financial records can be used to make decisions and confidently discuss their financial position with their family, business partners, and lenders.

TOPIC OVERVIEW

- ✓ Using Your financial statements
- ✓ Planning for change
- ✓ Understanding and using benchmarking
- ✓ Accounting Software and applications
- ✓ Hands-on application while learning

**Child Care
Available
for in-
person
sessions**

Training begins with virtual sessions, and concludes with a retreat

**FOR DATES, LOCATION,
INFORMATION
AND TO REGISTER:**



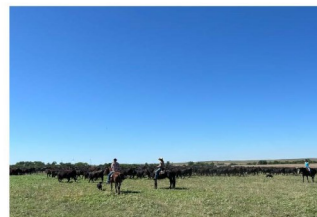
Call Us
575-472-3652



Visit Our Website
<https://guadalupeextension.nmsu.edu/annies-project.html>



BEEF QUALITY ASSURANCE TRAINING AND CERTIFICATION



April 23, 2025
from 9:00 am - 12:00 pm
at the San Miguel County
Fairgrounds

TO REGISTER



scan code

**TRAINING PROVIDED BY
DR. MARCY WARD,
NMSU LIVESTOCK SPECIALIST**

Program includes:

- Certification Training and Testing
- Continuing Education Unit Credits - CEUs
- Doughnuts and Coffee

Or Call 505-454-1497

Or go to this this website
<https://bqa.nmsu.edu/events.html>

What is Beef Quality Assurance?

- Guides producers using science-based production practices that assure cattle well-being, beef quality and safety.
- Provides systematic information to U.S. beef producers of how good husbandry techniques can be coupled with accepted scientific knowledge.
- Includes best practices around cattle handling, facility management, cattle transportation, good record.

If you are an individual with a disability who is in need of an auxiliary aid or service to participate, please contact Melissa Wright in advance at (505) 454-1497 or mwright1@nmsu.edu



BE BOLD. Shape the Future.
New Mexico State University

Melissa Wright,
San Miguel County Extension agent
505-454-1497, mwright1@nmsu.edu

New Mexico State University is an equal opportunity/affirmative action employer and educator. NMSU and the U.S. Department of Agriculture cooperating.



Take 10 with 4-H

What:

Idea/Information Sharing for 4-H Volunteer Leaders via Zoom

An extension agent or 4-H volunteer will present about 5-7 minutes on a topic and open up for sharing from participants for remainder of the 10 minutes. Sessions will be recorded and shared on the State 4-H website. Since the scheduled Take 10 sessions will only focus on one small part of a larger topic, additional resources will also be found on the State 4-H website under the select- ed Take 10 topic.



When:

1st Thursday of the month on the dates below during the lunch hour.

The topics held during the same lunch hour will be separate presentations.

2024 Dates/Topics/Times:

January 4, 2024 NM 4-H 101- Part 1 (12:15pm) Community Service Plan for the Year (12:30pm)	May 2, 2024 Ranch Camp (12:15pm) Food Challenge (12:30pm) Parliamentary Procedure (12:45pm)
February 1, 2024 Livestock School (12:15pm) Horse School (12:30pm)	October 3, 2024 New Family Information (12:30pm) NM 4-H Adult Forum (12:45pm)
March 7, 2024 Judging Quick Facts (12:30pm)	November 7, 2024 Range School (12:30pm)
April 4, 2024 Small Animal School (12:15pm) Dog School (12:30pm)	December 5, 2024 Project Clips (12:30pm)

Contact your County Extension Office for information on how to join the zoom sessions.



BE BOLD. Shape the Future.
College of Agricultural, Consumer
and Environmental Sciences
Cooperative Extension Service



If you are an individual with a disability and need an auxiliary aid or Service, please enter your required accommodations on Form 300.A-3 and notify your County Extension Office.

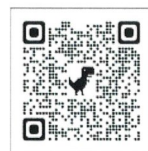
New Mexico State University is an equal opportunity/affirmative action employer and educator. NMSU and the U.S. Department of Agriculture cooperating.



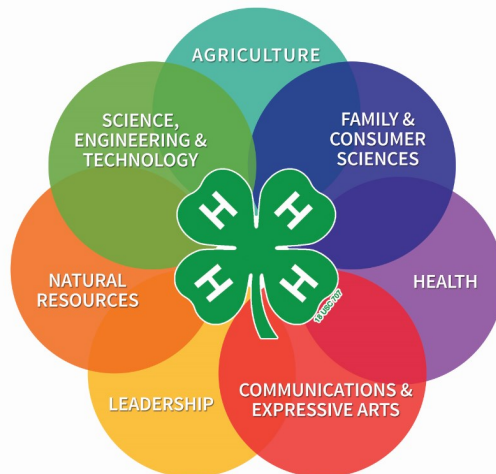
4-H is for YOU !
4-H is for FUN !

Enrollment for the 2024-2025 4-H Year begins October 1st!

For more information on joining a local 4-H Club please contact the NMSU Torrance County Cooperative Extension Service office at 505-544-4333 or torrance@nmsu.edu



BE BOLD. Shape the Future.
College of Agricultural, Consumer
and Environmental Sciences
Cooperative Extension Service
Torrance County Extension Office



**2025 New Mexico State 4-H
Buckles will be available for order!**

**Next order will be placed on
May 1, 2025!**

**See details and order form on the
website home page.**



Mark Your Calendars!



2024-2025

New Mexico 4-H Event Dates

***Tentative Schedule more information to follow**

EVENT	DATE
Educational Leadership Event – NM State 4-H Leadership Team Trip to Washington, D.C. (Other potential dates are in January and April)	TBD
Ignite Conference	March 12-16
Youth Shooting Sports Leadership Summit	TBD
Take 10 with 4-H	April 3
2 nd Thursday Zoom Training	April 10
Youth Get-Away (Glorieta, NM)	April 11-13
National 4-H Conference	April 11-16
National Extension Conference on Volunteerism (NECV)	April 21-25
Take 10 with 4-H	May 4
NM State 4-H Shooting Sports Championship (Raton, NM)	May 1-4
Small Animal School	TBD
4-H Horse School	TBD
NM Youth Ranch Management Camp	TBD
NE District Shooting Sports Contest	TBD
Southern 4-H Regional Livestock School	TBD
NW District Shooting Sports Contest	TBD
SW District Contest	TBD
SE District Contest	June 17-19
Northern 4-H Regional Livestock School	TBD
Northern District Contest	TBD
National 4-H Shooting Sports Championship	TBD
4-H Dog School	TBD
State 4-H Conference	July 7-10



Mark Your Calendars!



2024-2025

New Mexico 4-H Event Dates

**Tentative Schedule more information to follow*

EVENT	DATE
	August
New Mexico State Fair	September 6-14
New Mexico Food Challenge	TBD
NM State 4-H Horse Show	TBD
Southern New Mexico State Fair	September 24-28
NM State 4-H Rodeo Finals	TBD
New Mexico 4-H Adult Retreat	November 8

New Mexico 4-H Event Deadlines

Event	Registration Deadline Date
State 4-H Conference	June 16, 2025
Photo Contest	August 1, 2025
New Mexico State Fair Indoor Exhibit Entries	August 22, 2025

Community Service Scholarship Criteria

- Available to any Novice, Junior or Senior 4-H Member serving as a State 4-H Officer, Ambassador, Diplomat or participant in a 4-H activity.

EVENT (Community Service Scholarship Application)	DEADLINE FOR APPLICATION (2 months before event registration deadline)
4-H Dog School	April 15, 2025
Livestock School	April 15, 2025
State 4-H Conference	April 15, 2025
Ambassador/Officer Positions	May 1, 2025

ATTENTION 4-H YOUTH:

The 4-H County Council has voted to continue to provide all current Torrance county club members the opportunity for sponsorship of \$100 towards their choice of District, State, or National 4-H Event or Activity. To qualify you must be of 4-H age and be a Member in Good Standings (see below) and not owe any money to your club or county council.

The State 4-H Leaderline

A quarterly newsletter for 4-H volunteer leaders to provide you with the latest 4-H news in New Mexico.

Available at:

<http://aces.nmsu.edu/4h/newsletters.html>

MEMBER IN GOOD STANDING

According to State 4-H policy, a 4-H member shall attend at **least 40%** of all club meeting and activities. If a 4-H member does not meet this requirement, they will not be a member in good standing.

Current Torrance County 4-H By-Laws state for a member to remain in good standing the member must complete the following :

1. **Attend 50% (6) regular club meetings during the current 4-H year and attend (4) prior to County Fair.**
2. **Keep records of projects and turn them into the club leader.**
3. **Give a demonstration or illustrated talk.**
4. **Participate in two or more community service projects and two or more club activities and two or more club or county fundraisers.**
5. **Meet all of the requirements before exhibiting any projects. Members must be enrolled in the projects they are exhibiting.**
6. **Exhibit projects at County/State Fair**

4-H is a **community** of **young people**
 **across America** who are learning
leadership, citizenship and
life skills.

Working With Minors Training - New Year started October 1

As we begin the new year, it is time for our volunteers to take the Working with Minors module for 2021-2022 year. To make this process easier, a reset button has been added. Please share these steps with your volunteers.

Once the volunteer is in his/her/family Zsuite account and has selected his/her profile follow the steps below:

1. Click on Clover Academy on left menu bar
2. Launch Clover Academy
3. Open NM Working with Minors (even though it says completed)
4. Under 'You have earned a certificate' is a button that says "Reset All Course Progress for the New Year (Cannot be undone)'
5. Click on the blue 'Reset All Course Progress for the New Year (Cannot be undone)'
6. Start Course

Complete course and a certificate will be available with the completion date. The county 4-H Zsuite administrator should be able to see the volunteer completion on his/her county page.

Pioneers 4-H Club

Meets 2nd Wednesday @ 5:30 PM

E. Torrance Soil & Water Bldg.

Estancia

Kay Sartori (505) 985-8346

kay.sartori@yahoo.com

Mustang Wranglers 4-H Club

Meets 2nd Monday @ 6:30 PM

Mountainair High School FFA

Agricultural Building

Brenda Cain (505) 847-0966

drblmack@aol.com

Jill Encinias (505) 321-9553

Moriarty Desperados 4-H Club

Meets 2nd Thursday @ 6PM

109 Chavez Road,

Moriarty

Leslie Chavez (505) 328-5837

zack2006@msn.com

Tumbleweeds 4-H Club

Meets 2nd Thursday @ 6PM

Enchanted Legacy

1011 Allen Ave, Estancia

Kaycee Chavez (505) 301-9676

Kaycee.riley9@gmail.com



4-H Member Ages for 2024-2025 4-H Year

CLOVERBUDS: 5 to 8 years old AND in Kindergarten, 1st, or 2nd grade

NOVICE: 9 to 11 years old or 8 years old AND in the 3rd grade.

JUNIOR: 12 and 13 years old or 11 years old AND in the 6th grade.

SENIOR: 14 –18 years old OR 13 years old AND in the 8th grade

Youth who are 19 on or by December 31 of the current 4-H year (2025) are not eligible to enroll as a 4-H member. **4-H Ages are based on the Member's Age as of January 1, 2025**



NMSU 4-H Youth Development Facebook Page



This page shares club, county and state events, pictures, upcoming activities, community service projects, individual and club successes and much more. The 4-H Facebook page wants to show off what the states 4-H clubs and counties have done. If your club or county has a page, you can simply go in to like the NMSU 4-H Youth Development page <https://www.facebook.com/NMSU4H/> and begin posting things. If you don't have one just send the information to azemler@nmsu.edu and it will be put on the page.

Find more great information to help make your life easier on the NMSU Pinterest boards. CHECK IT OUT HERE <https://www.pinterest.com/nmcoopext/>



Contact us:

Torrance County Extension Office
P.O. Box 168
Estancia, NM 87016-0168
(505) 544-4333
Torrance@nmsu.edu



All About Discovery!™
**College of Agricultural, Consumer
and Environmental Sciences**
Cooperative Extension Service
Extension 4-H Youth Development

New Mexico State University is an equal opportunity affirmative action employer and educator. All programs are available to everyone regardless of race, color or national origin. NMSU & USDA Cooperating.